

Cleveland
Hillel

IMPACT REPORT

2024 – 2025



Dear Friends of Cleveland Hillel,

As we reflect on this past year at Cleveland Hillel, we are filled with pride in our students and deep gratitude for your support. In a time of uncertainty and challenge, **Cleveland Hillel has remained a steady, welcoming presence across all of our campuses, all thanks to supporters like you.**

This year, more than **700 Jewish students** connected with Hillel through meaningful experiences in Jewish life, learning, leadership, and community. Through a variety of programming, our multi-campus model continues to meet students where they are – literally and figuratively! Whether it's a Shabbat dinner, Bagel Brunch, our Summer Internship Program, or simply a quiet space to unwind and be with peers, Hillel helps students feel grounded and supported.

Three of our biggest areas of focus have been **Hillelness**, our health and wellness initiative started by Case Western Reserve University student Charlie Wittenberg, '25, growth at **Oberlin Hillel**, and meeting our students' needs with **expanded hours** at the Albert & Norma Geller Hillel Student Center. **This work is a core part of how we care for students, not just as scholars and emerging young professionals, but as whole people.**

Looking ahead, we're excited to strengthen the relationships that make this work possible by celebrating the people who sustain our mission, and building even more intentional spaces for belonging, meaning, and joy on all our campuses. Thank you for being an essential part of our Hillel family. We truly couldn't do this without you.



JARED ISAACSON

Executive Director



JENNIFER COHEN

Board President

Hillelness

Cleveland Hillel's **Hillelness** initiative combines the engagement expertise of Hillel with the bigger concept of wellness to prioritize student mental, emotional, and physical health and well-being through meaningful, consistent programming. Through our partnership with the Jewish Family Service Association of Cleveland, this program fosters support through student-led conversations and one-on-one counseling sessions with mental health professional **Nate Jones, M.Ed., LPC**. By recognizing the unique challenges Jewish students face, Cleveland Hillel helps them feel seen, supported, and empowered. This commitment to mental health is part of our broader goal to ensure students thrive not just academically, but emotionally and spiritually as well.

Oberlin Hillel

Oberlin Hillel is thrilled to announce **the opening of a dedicated physical space on campus** – a major milestone in our growth! For the first time in recent history, Jewish students will have a consistent, welcoming home for gatherings, holidays, meals, and learning. This space is more than just a location – **it's a signal to students that they belong and are supported**. As we look to the future, this new home marks an exciting chapter of connection, collaboration, and renewed Jewish vibrancy at Oberlin. *To learn more, contact **Yaffa Muhlbaum** at ymuhlbaum@clevelandhillel.org.*

Extended Hours

Cleveland Hillel is here for students in the moments they need us most. When students asked for more access to our building (and more opportunities to gather in our new kitchen and dining space!) we listened. Today, our doors stay open longer, our programs run deeper, and our care extends further. Every extra hour means more students can share a meal, find comfort in community, and feel supported on Case Western Reserve University's campus and beyond.

HILLEL BY THE NUMBERS

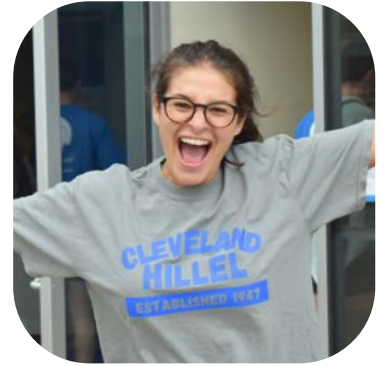


978

SHABBAT &
HOLIDAY MEALS
SERVED

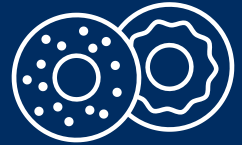


703
INDIVIDUAL
STUDENTS
REACHED



716

EVENTS HELD



4

TONS OF BAGELS
PROVIDED

FINANCIALS

334

TOTAL DONORS

\$317k

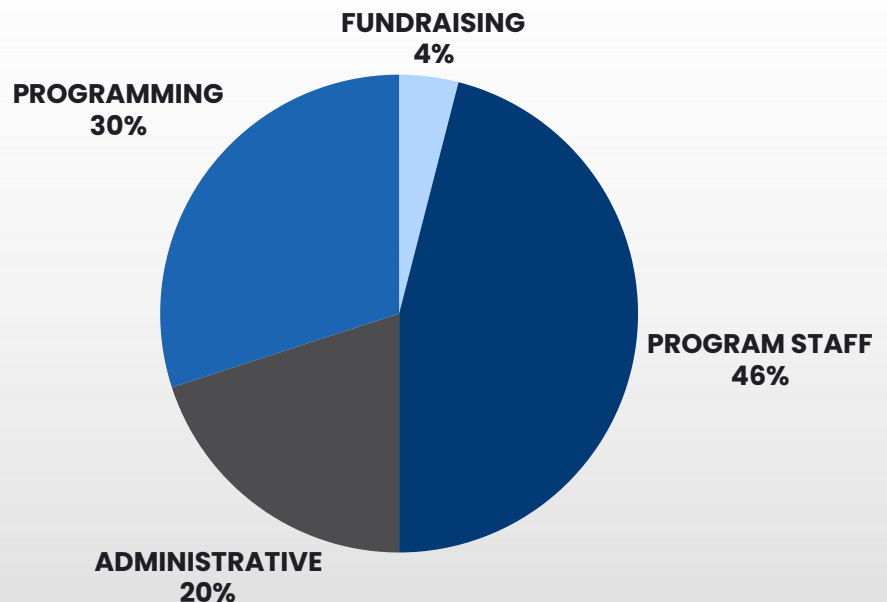
DOLLARS RAISED

107

NEW DONORS

EXPENSES

Cleveland Hillel remains committed to responsible financial stewardship, ensuring that every dollar spent directly supports our mission of enriching Jewish life on campus. This year, the majority of our expenses were allocated to student programs, engagement initiatives, and leadership development across multiple campuses. Additional funds supported staffing, operations, and maintaining safe and welcoming spaces for our students. We are proud to invest in the experiences that empower the next generation of Jewish leaders while maintaining a strong foundation for organizational sustainability.



THANK YOU

for your investment!

Thank you for being a vital part of the Cleveland Hillel community. Your generosity, partnership, and belief in our mission make everything we do possible. Because of you, Jewish students across our campuses feel supported, empowered, and connected to a vibrant Jewish life. We are deeply grateful for your commitment, and excited for all we'll continue to build together.



2024-25 BOARD OF DIRECTORS

EXECUTIVE COMMITTEE

Jennifer Cohen President	Benjamin Golsky Secretary
Michael Henry Treasurer	Marc Borstein Immediate Past President
Elisabeth Sherman	Darby Steiger

BOARD MEMBERS

Gerald Appel z"l	Cindy Chaiten
Elad Granot	Jerold S. Goldberg
Debbie Kaufman	Steve Lander
Jonathan A. Leebow	Shelly Lewis
Lawrence Mack	Arkady Polinkovsky
Clifford Wolf	Ari Witkes

View the **full impact report** on our website or by scanning the QR code



OUR STAFF

Jared Isaacson
Executive Director

Kim Littman
Business Director

Tia Wilson
Office & Operations Manager

Michael Snyder
Manager of Graduate & Special Engagement Projects

Jill Ross
Assistant Director

Yaffa Muhlbaum
Associate Director of Oberlin Hillel

Laureline Pintel
JAFI Israel Fellow

Kayla Eydel
Innovation Springboard Fellow

Roxie Popovsky
Ezra Springboard Fellow

Nina Bilz
Senior Manager, Campus Marketing & Development

Nate Jones
JFSA Counselor

Ilana Mandel
JFSA Wellness Clinician

